

USAID RESILIENCE AND RESILIENCE CAPACITIES MEASUREMENT OPTIONS

GOAL: Promote consistent and context-specific measurement of resilience and resilience capacities as part of the monitoring and evaluation of USAID-funded food security activities to ensure effective resilience programming and continuous improvement based on evidence.

OPTIONS OVERVIEW

The **Resilience and Resilience Capacities Measurement Options** present three measurement approaches for analyzing resilience: Light, Intermediate, and Full, each of which reflects a different level of effort—and budget—in terms of the survey instrument and analysis used. This document is one of five intended to be used together for analyzing resilience in relevant USAID activities.

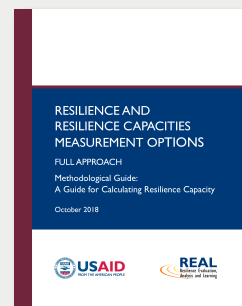


DATA COLLECTION TOOLS



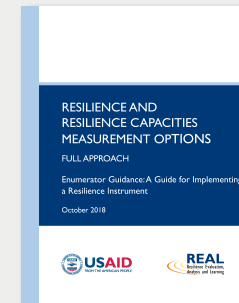
Household and Community Questionnaires list all the survey questions that should be used to measure resilience capacities and components. Questions should be adjusted to reflect local terminology and context.

TECHNICAL GUIDANCE



The **Methodological Guide** provides detailed guidance on which questions in the questionnaires measure the selected resilience components and capacities.

It also shows **how to calculate** individual components of resilience, the three resilience capacity indices, and an overall household resilience capacity index.



An **Enumerator Guide** gives specific instructions to the interviewer for each question in the household and community questionnaires.



USAID
FROM THE AMERICAN PEOPLE



DOWNLOAD THEM AT: WWW.FSNNETWORK.ORG/REAL