



SCALE

Resource Guide

NOVEMBER 2022

PHOTOGRAPHY AND DESIGN CREDITS

Front Cover Photos:

Elizabeth Dalziel/Mercy Corps; Ezra Millstein/Mercy Corps; Sean Sheridan/Mercy Corps;
Georgina Smith/PABRA; Ezra Millstein/Mercy Corps

Back Cover Photo:

Rudy Nkombo/Mercy Corps

Design and layout:

TM Design

CONTACT INFORMATION

www.fsnnetwork.org/SCALE

scale@mercycorps.org

This resource guide is made possible by the generous support of the American people through the United States Agency for International Development (USAID). The contents are the responsibility of the SCALE Award and do not necessarily reflect the views of USAID or the United States Government.

WELCOME FROM KRISTIN LAMBERT, SCALE DIRECTOR

Dear Colleagues,

Over the last five years, the SCALE team has had the immense pleasure of working alongside and learning with so many of you. From Chiefs of Party to technical team leads, USAID partners, government representatives, local organizations and fellow Associate Award members, your insights and contributions have been an indelible part of our support to the wider food security community.

The SCALE team is proud to share the following compendium of resources, tools and learnings captured over the lifetime of the award. This document represents not only SCALE's efforts, but the efforts of all of you. We thank you for your willingness to collaborate, to challenge assumptions and to continually deepen our collective knowledge in the pursuit of better serving the communities with which we work.

In gratitude,
Kristin Lambert
SCALE Director

THE GUIDE

Are you interested in learning more about agriculture, natural resource management, and livelihoods in food security projects? This guide includes descriptions of and links to a suite of training materials, technical resources, research, learning documents, and webinars. These resources were produced by the United States Agency for International Development Bureau for Humanitarian Assistance (USAID/BHA)-funded [SCALE](#) Award between 2018-2022. While the materials were developed with BHA partners in mind, most will be useful to the wider Agriculture and Livelihoods communities. You'll find links to resources on topics including:



Resilient Agriculture



Livelihoods |
Markets



Social and Behavior
Change | Adult Learning



Seeds



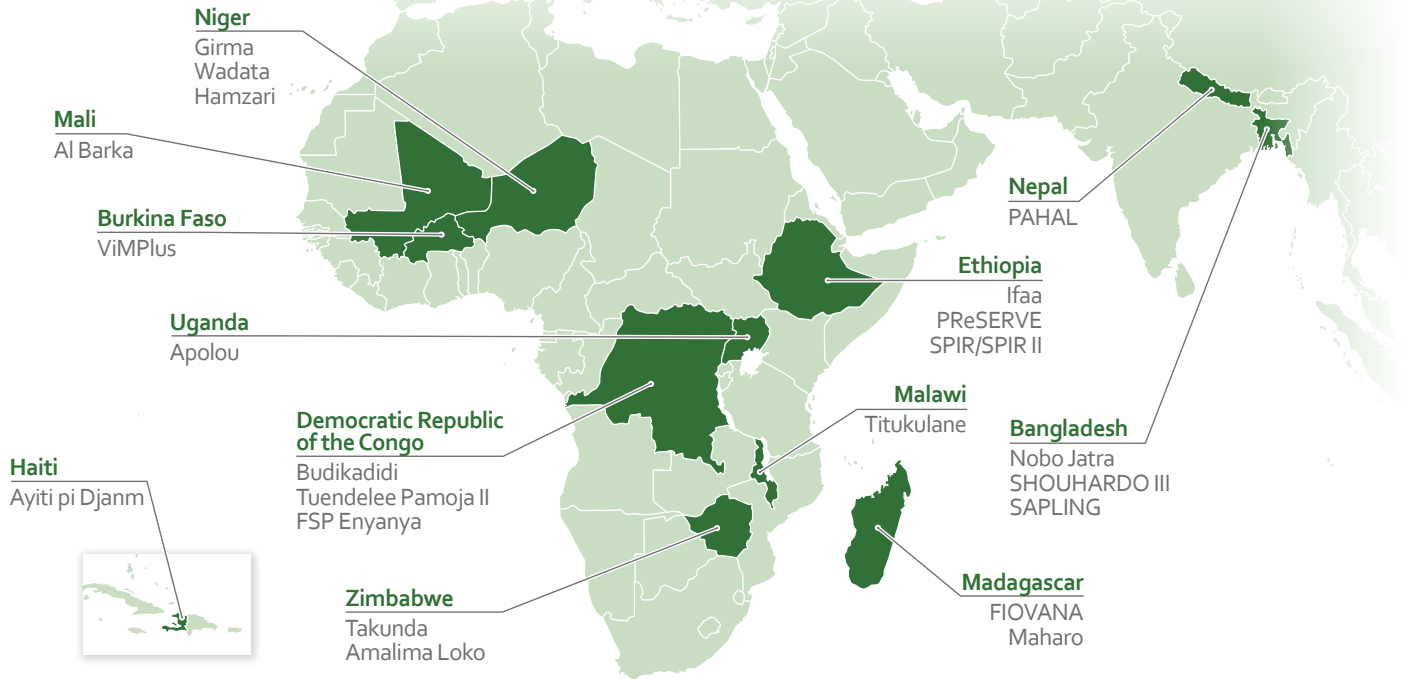
Climate Resilience

WHO WE ARE

Strengthening Capacity in Agriculture, Livelihoods, and Environment (SCALE) is a United States Agency for International Development Bureau for Humanitarian Assistance (USAID/BHA)-funded initiative to enhance the impact, sustainability, and scalability of agriculture, natural resource management, and alternative livelihoods activities in emergency and non-emergency contexts. SCALE is implemented by Mercy Corps in collaboration with Save the Children.

OUR REACH

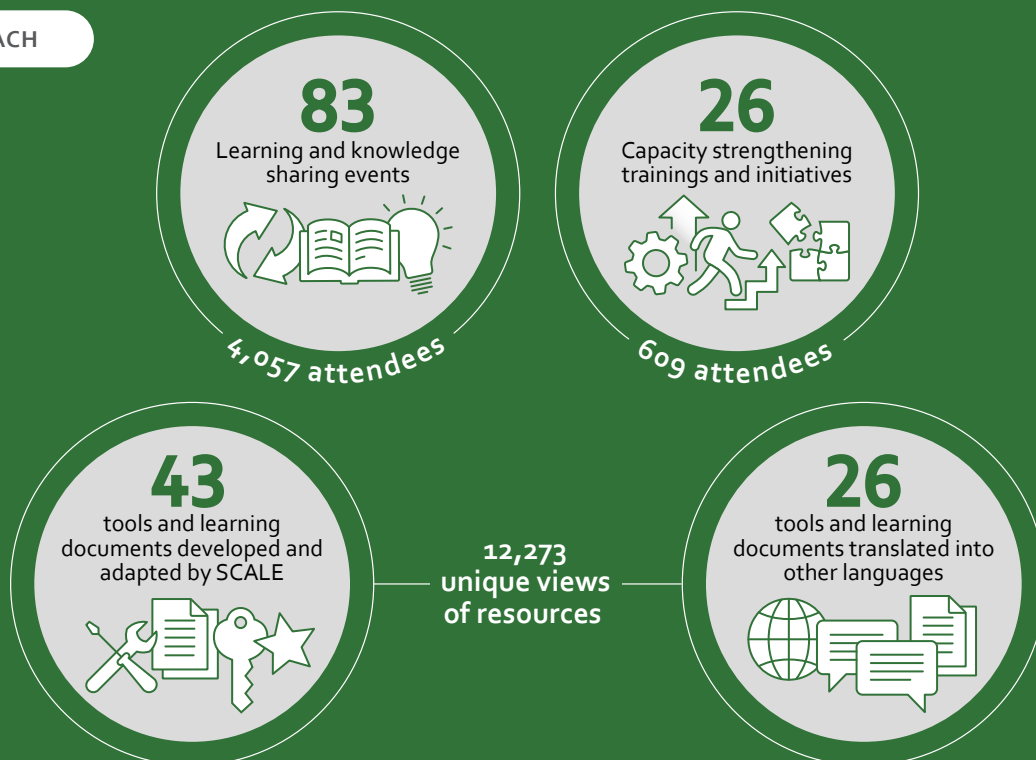
ENGAGEMENT WITH PROGRAM TEAMS



Types of Engagement

Training activities; mentorship initiatives; inception, culmination, and sustainability workshops; research initiatives and impact assessments; learning products and events; and one-to-one technical support

GLOBAL REACH



THE RESOURCES

Each resource includes the name, resource type, a brief description, publication year, and the hyperlink to the online source (including hyperlinks to the resource in other languages, if applicable). Below are keys for the resource type and languages.

Resource Type Key

SCALE produced various types of resources. Each resource in the pages that follow has a corresponding icon that identifies the type of resource.



Learning Documents: these include case studies, summary findings from consultations, learnings from pilot testing approaches, and Covid-19 adjustments



Research: these include impact assessments and findings from research initiatives



Technical Resources: these include technical manuals, guides, toolkits, and checklists, all of which support the “how-to” of implementation



Training Materials: these include training manuals, online learning courses, training videos, facilitator guides, and curricula



Webinars: these include launches of new tools, conversations with technical experts, program highlights, and more

Language Key

All resources are in English and many are available in other languages. You can access the other language versions by clicking on the language icon next to each resource.

AM Amharic

AR Arabic

ES Spanish

FR French

CONTENTS

- RESILIENT AGRICULTURE..... 6**
 - Resilience Design (RD) 6
 - Permagardens 8
 - Quality Implementation: Training, Mentoring, and Cascading 10
 - Additional Resilient Agriculture Resources 11

- LIVELIHOODS | MARKETS..... 13**
 - Market Systems Approaches 13
 - Emergency and Early Recovery..... 14
 - Youth..... 16
 - Additional Alternative Livelihoods Resources..... 17

- SOCIAL AND BEHAVIOR CHANGE | ADULT LEARNING..... 18**
 - Make Me a Change Agent (MMCA)..... 18
 - Social and Behavior Change 19
 - Adult Learning 19

- SEEDS..... 21**
 - Key Resources 21

- CLIMATE RESILIENCE..... 23**
 - Key Resources 23

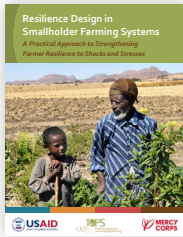
- SPECIAL INITIATIVES..... 25**
 - Facilitators of the Year 25
 - Creative Adaptation Awards 25

ACRONYMS

| | |
|---------------------|---|
| BHA | USAID Bureau for Humanitarian Assistance |
| CAT | Context Analysis Tool |
| CIS | Climate Information Services |
| CISRI | Climate Information Services Research Initiative |
| CRS | Catholic Relief Services |
| DFSA | Development Food Security Activity |
| DRC | Democratic Republic of the Congo |
| EMF | Ecological Market Farm |
| FCFA | Future Climate for Africa |
| FFP | USAID Office of Food for Peace |
| ICPAC | IGAD Climate Predictions and Applications Center |
| IRC | International Rescue Committee |
| MMCA | Make Me a Change Agent |
| MSD | Market Systems Development |
| MUS | Multi-Use Water Systems |
| NRM | Natural Resource Management |
| PAHAL | Promoting Agriculture, Health and Alternative Livelihoods |
| PCISSD | Participatory Climate Information Services Systems Development |
| PG | Permagarden |
| PRO-WASH | Practices, Research, and Operations in Water, Sanitation, and Hygiene |
| PSP | Private Service Provider |
| RD | Resilience Design |
| RFSA | Resilience Food Security Activity |
| SBC | Social and behavior change |
| SCALE | Strengthening Capacity in Agriculture, Livelihoods, and Environment |
| SERT | Seed Emergency Response Tool |
| TOPS Program | The Technical and Operational Performance Support Program |
| USAID | United States Agency for International Development |
| WASH | Water, Sanitation, and Hygiene |
| WISER | Weather and Climate Information Services for Africa |

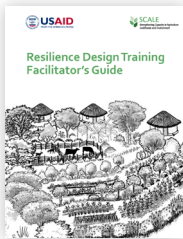


RESILIENCE DESIGN (RD)



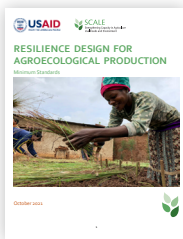
Resilience Design in Smallholder Farming Systems Approach **ES** **FR**

This technical guide helps farmers and those who support them gain a deeper understanding of their farming systems within their agroecosystems. Guided by a set of principles, farmers can develop a more integrated site design in relationship to their unique community and surrounding natural systems, ultimately building a more adaptive and productive farming system that is more resilient to the increasingly frequent and intense environmental and economic shocks and stresses that affect it.¹ **2017**



Resilience Design in Smallholder Farming Systems Facilitator's Guide **FR**

This facilitator's guide is a training tool that can be used to cascade the RD approach. Prior to using this guide to conduct a training session, facilitators should have received prior training in the RD approach, agroecology, or agriculture. It is also helpful for facilitators to have had experience conducting large-scale field trainings and to understand best practices for organizing such events. Prior to conducting an RD training, facilitators should review the RD approach document and this Facilitator's Guide in their entirety. **2022**



Resilience Design for Agroecological Production: Minimum Standards **FR**

This technical guide provides an overview of eight minimum standards that apply to all RD site interventions. These standards encourage farmers and those who support them to think differently about agricultural development and identify ways to work with natural systems rather than against them, resulting in more resilient and productive farming systems that enhance household food security, nutrition and incomes. **2021**

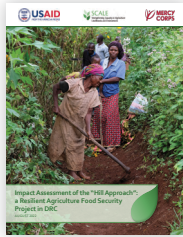


Resilience Design in Smallholder Farming Systems Approach: Checklist & Guidance **FR**

This quality monitoring and management tool is used to enhance the implementation of RD interventions. The checklist is based on the RD Minimum Standards and is focused on six core technical elements of the approach that are readily observable and should be monitored frequently. These relate to: resources, design, water, soil health, biodiversity and protection. **2021**

¹ This approach was developed through SCALE's predecessor award, the Technical and Operational Performance Support (TOPS) Program, a USAID Office of Food for Peace (FFP)-funded award that ended in 2017

RESILIENCE DESIGN (RD)

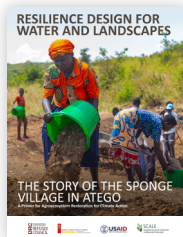


Impact Assessment of the “Hill Approach”: a Resilient Agriculture Food Security Project in DRC **FR**

This research study assesses the relevance, impact, and sustainability of the Hill Approach. Drawing from the RD approach, the Hill Approach was designed by the USAID/BHA-funded Food Security Program Enyanya in South Kivu in the Democratic Republic of the Congo (DRC) to respond to the needs of tenant farmers to reduce soil erosion, increase productivity, and increase tenure security. The report explores the outcomes of the approach for tenants, landowners, and the community, as well as implementation challenges and recommendations for improvement and replication of the approach. **2022**

Webinar: [Hill Approach Study Results](#)

Brief: [Piloting a Hill Approach for Resilient Agriculture in South Kivu](#)



Resilience Design for Water and Landscapes: The Story of The Sponge Village of Atego

This primer supports those working in humanitarian and development contexts by highlighting a design process for increasing community resilience to shocks and stresses. The design process is based on low-cost, low-tech, process-based solutions that mimic natural processes and ecological cycles. The primer recounts the journey of how Atego became a sponge village and how others can follow in its footsteps through RD. **2022**

Webinar: [The Sponge Village of Atego: Resilience Design for Water and Landscapes](#)



How Resiliently Designed Food Systems Achieve Both NRM and Nutrition Wins

This workshop, part of the 2021 Borlaug Dialogue, featured food security program examples from Kenya and the DRC focused on the environment-nutrition nexus, including a virtual walk to see the RD approach in action. **2021**

PERMAGARDENS



Permagarden Manual **AM ES FR**

This technical manual outlines the permagarden method, which combines components of permaculture, an agricultural approach that utilizes natural systems for production, and bio-intensive agriculture, an agricultural approach that maximizes production through sustainable practices and increased biodiversity, to create a highly productive garden using a small amount of land.² A training manual and guidelines are also available on the Permagarden webpage. **2017**



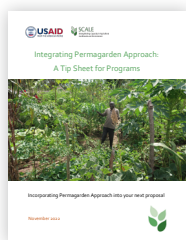
Revised Permagarden Manual

This revised technical manual expands the focus of a small kitchen garden to integrate opportunities throughout the compound. This compound-level Permagarden Technical Manual provides updates to reflect the latest guidance, best practices, and lessons learned since the Permagarden Approach was originally developed. **2022**



Permagarden Foundations Course **FR**

This online course comprises a series of 9 short videos and complementary 'how-to' sheets that introduce the foundations of the Permagarden Method and how to apply them. The course first explores the basics of a permagarden and how it contributes to household resilience; then details the building blocks of a permagarden (water, soil, and biodiversity); and concludes by introducing a 4-step cyclical process to develop and maintain a permagarden (observe, design, implement, and monitor). **2022**



Integrating Permagarden Approach: A Tip Sheet for Programs

This tip sheet outlines the Permagarden Approach and provides guidance for incorporating the Approach in proposals. The document shares important considerations and design elements, discusses external and contextual factors, and includes a detailed FAQ section. **2022**

² This approach was developed through the USAID/FFP TOPS Program.

PERMAGARDENS



Permagardens: Qualitative and Quantitative Survey Tools

These tools support program teams to capture data on the impacts on their permagarden activities, including via a quantitative survey and qualitative focus group discussions with permagarden participants. The tools can be tailored for specific program contexts and learning objectives. **2022**



Permagarden: Technical Checklist & Guidance **FR**

This quality monitoring and management tool is used to enhance the implementation of the Permagarden method. The checklist is based on the RD Minimum Standards and is focused on six core elements of the Permagarden approach that are readily observable and should be monitored frequently: resources, design, water, soil health, biodiversity and protection. **2021**



Permagarden Videos **FR**

This video series introduces the Permagarden Approach and how to implement it step-by-step. The videos focus on water management, building healthy soils using local resources, and strengthening local capacity. The videos were created by the USAID/BHA-funded Food Security Program Enyanya in DRC with the support of SCALE. **2021**



How Permagardens and Kitchen Gardens Contribute to Household Food Security: An Assessment of Gardens in Nepal

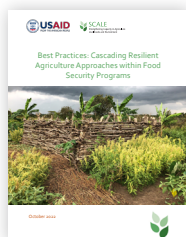
This report presents the findings from a study of the USAID/BHA-funded Promoting Agriculture, Health and Alternative Livelihoods (PAHAL) program's permagarden and kitchen garden activities, one component of the program's broader food security and resilience-building strategy. The Mercy Corps-led PAHAL program in Nepal aimed to improve access, availability and use of food and income with associated health and nutrition benefits through improved agricultural production and marketing. **2020**



The Permagarden Pathway to Resilience & Food Security: Lessons in Scaling Up from Nepal and Uganda

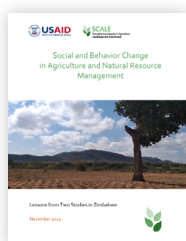
This webinar covered the Permagarden Method as part of agriculture, nutrition, and multisectoral programming. Mercy Corps and African Women Rising share challenges, successes, and evidence around implementing and scaling permagardens. **2020**

QUALITY IMPLEMENTATION: Training, Mentoring, and Cascading



Best Practices: Cascading Resilient Agriculture Approaches within Food Security Programs

This document presents a set of best practices for BHA-funded program staff to consider when cascading resilient agriculture approaches to partner organizations, agricultural extension staff and farming communities. The practices are based on Resilience Food Security Activity (RFSA) evaluations and incorporate past learning on adaptive management, mentorship and the use of demonstration sites, as well as adult learning principles and social and behavior change studies. This resource is also in the [Social and Behavior Change](#) section. **2022**



Social and Behavior Change in Agriculture and Natural Resource Management **FR**

This document highlights key learnings from studies conducted by the USAID/BHA-funded Amalima Loko program in Zimbabwe around the barriers and motivations for behavior change in agriculture and natural resource management (NRM) practices in its implementation area. It explores insights and highlights issues that are broadly applicable to the work of designing and implementing social and behavior change (SBC) approaches in these sectors. This resource is also in the [Social and Behavior Change](#) section. **2022**



Triggering Change: Five Pivotal Moments in Permagarden & Resilience Design Training

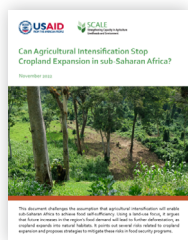
This learning brief summarizes five pivotal moments that helped participants understand the RD approach during a training in Zimbabwe in October 2021. The moments include: seeing examples of Resilience Design in practice; putting theory into practice; the sponge demonstration; translating rainfall to banked water resources; and witnessing abundant biodiversity. **2022**



Resilience Design Mentorship Pilot: Approach, Findings, and Lessons Learned

This report summarizes the methodology, findings from the baseline and endline surveys, and lessons learned from an agriculture mentorship project that SCALE piloted in the DRC from May 2019-March 2020. The pilot mentorship initiative included a small group of agriculture technical staff from the USAID/BHA-funded Food Security Program Enyanya. This resource is also in the [Social and Behavior Change](#) section. **2020**

ADDITIONAL RESILIENT AGRICULTURE RESOURCES



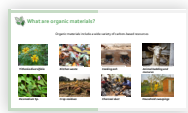
Can Agricultural Intensification Stop Cropland Expansion in sub-Saharan Africa?

This document challenges the assumption that agricultural intensification will enable sub-Saharan Africa to achieve food self-sufficiency. Using a land-use focus, it argues that future increases in the region's food demand will lead to further deforestation, as cropland expands into natural habitats. It points out several risks related to cropland expansion and proposes strategies to mitigate these risks in food security programs. **2022**



Successful partnerships for Multiple-Use Water Services in the Takunda and Amalima Loko intervention areas of Zimbabwe

This applied research supported by PRO-WASH and SCALE investigates some of the difficulties in adopting Multi-Use Water Systems (MUS), as well as the ways in which RFSA partners are overcoming these difficulties, including innovative, context-specific strategies for improving MUS operation, access, reliability and sustainability. The focus is on two RFSA partner areas in Zimbabwe (Amalima Loko and Takunda), but the resulting tools, guidance, and findings are more generally relevant to BHA partners and active projects supporting food security and water, sanitation and hygiene (WASH) activities. **2022**



Fertilizing with Organic Materials for Smallholder Farmers in Emergency and Non-Emergency Contexts **FR**

This guidance document was developed in response to the multiple threats of rising global fertilizer prices, declining soil fertility, and increased prevalence of climate shocks faced by smallholder farmers. The techniques in this guidance rely on basic plant nutrition concepts and are sufficiently flexible so that program staff can tailor their messages to the context at hand. This document has been written to be used by non-agricultural program staff, and the language is therefore kept straightforward and concise. **2022**



Agroecology in Action: Pathways to Resilient Food Systems

This conversation brought together international practitioners, researchers, and private sector partners to reflect on the role of agroecological approaches in building sustainable, regenerative, and resilient food systems. **2020**

OTHER RESILIENT AGRICULTURE RESOURCES



Small Scale Agroecological Approaches for the COVID-19 Response and Beyond

This was an interactive discussion on what makes a garden resilient and the contributions of household gardens to food security and nutrition drawing on experiences from Uganda to Vietnam and across the global food security community. **2020**



SCALE Survey Results: Agriculture and Natural Resource Management in Fragile and Emergency Contexts

This document summarizes a review conducted by SCALE in 2019 with emergency program implementers. It highlights practical steps for strengthening agriculture and NRM programming in places affected by conflict, weak institutions, volatile markets, and climate-related shocks. **2020**



Adaptive Thinking in Agriculture & Natural Resource Management

This paper outlines ways to foster adaptive thinking, addresses key challenges, and proposes solutions for wider adoption, drawing on research and interviews with program implementers. It adds to the growing dialogue within the development community about how best to design more adaptive agriculture and NRM programs, and what tools and trainings can develop the skills needed to effectively respond to and manage change. **2019**



MARKET SYSTEMS APPROACHES



Comparing Standard and Market Systems Development Approaches to Rural Employment **FR**

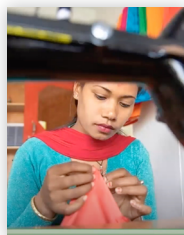
This document describes how MSD approaches differ from more standard approaches, which are limited in supporting new or better income generating activities. The report dives into how MSD can be applied to more sustainably support rural employment programs and highlights several projects taking this approach. **2021**

Webinar: [Just the Job: Can Market Systems Development Support Rural Employment?](#)



SCALE Markets-Based Programming Consultation Findings: Key Challenges and Needs for USAID/BHA Implementing Partners

This document summarizes findings from consultations with BHA staff and implementing partners who are increasingly applying market-based approaches to interventions, including those related to agriculture, entrepreneurship, employment, and financial inclusion. The document then lays out a path forward for SCALE to address the needs identified. **2021**



Market-based Approaches to Alternative Livelihoods: Lessons from Bangladesh and Nepal

In this webinar experts from the Nobo Jatra program (World Vision, Bangladesh) and Sabal program (Save the Children, Nepal) delved into market-based approaches to alternative livelihoods within USAID/FFP initiatives. Listen to practical experiences, successes, and challenges in engaging the private sector and working with women and youth. **2019**



Building Household Resilience with Inclusive Financial and Market Systems

This webinar examined how the USAID/FFP-funded ENSURE DFSA in Zimbabwe enhanced household-level resilience through an integrated systems approach to financial inclusion, value chain support, and market systems development. **2019**

EMERGENCY AND EARLY RECOVERY



Applying Adaptive Management to Livelihoods in Emergency Settings: Challenges and Opportunities **FR**

This technical brief invites an alternative perspective to adaptive management, which is a way of working that starts with an assumption of uncertainty around how to address a particular challenge, and provides an overview of how adaptive management can be applied to livelihoods and markets work in emergencies. The foundation of this brief is a literature review of over 85 documents and resources on adaptive management in humanitarian settings. **2022**



Resources to Strengthen Adaptive Management for Livelihoods Programming in Emergency Settings

This document accompanies the *Applying Adaptive Management to Livelihoods in Emergency Settings* brief above, and focuses on existing tools that can be used for livelihoods and markets work in emergencies—where to find them and when to use them. **2022**



Market-Based Programming Framework **AR ES FR**

This framework was designed to help humanitarian actors understand market approaches in fragile contexts. Market-based programming or market-based interventions are understood to be projects that work through or support local markets and contribute to positive market systems change. The terms cover all types of engagement with market systems, ranging from actions that deliver immediate relief to those that proactively strengthen and catalyze local market systems or market hubs. **2022**

Video: [Understanding Market-Based Programming](#) **AR ES FR**

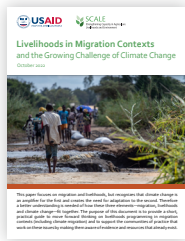
Video: [Key Definitions for Market-based Programming](#)



Market-Based Programming and Shelter **AR ES FR**

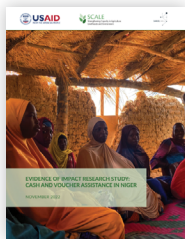
This simple guide is for shelter practitioners on implementing market-based programming in humanitarian and development responses. **2022**

EMERGENCY AND EARLY RECOVERY



Livelihoods in Migration Contexts and the Growing Challenge of Climate Change

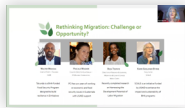
This paper focuses on migration and livelihoods, but recognizes that climate change is an amplifier for the first and creates the need for adaptation to the second. The document provides a short, practical guide to move forward thinking on livelihoods programming in migration contexts (including climate migration) and to support communities of practice that work on these issues by making them aware of evidence and resources that already exist. **2022**



Evidence of Impact Livelihoods Study

This study focuses on the potential of digital solutions to stabilize and improve the livelihoods of repeatedly displaced populations by exploring the International Rescue Committee's (IRC) cash and voucher assistance programming in Niger. IRC/Niger's approach has evolved over the years from a cash and paper-based approach to digital approaches. This evolution, which happened over successive funding cycles, offers an opportunity to examine the strengths, weaknesses, and impact of the approach, as well as learn from its iterative process. **2022**

Webinar: *Evidence of Impact Livelihoods Study Finding*



Rethinking Migration: Challenge or Opportunity?

This was an armchair chat with practitioners and researchers discussing existing assumptions about economic migration and its role in development, citing examples from El Salvador, Nepal, Niger, and Zimbabwe. **2021**

YOUTH



A Guide and Cheat Sheet for Resilience Food Security Activities: How to Engage Youth in Alternative Livelihoods

This guide is a “cheat sheet” to the many thoughtful and evidence-based youth-focused tools and guidance that exist in the international development world. It is designed to point implementers to the most relevant materials, including key knowledge platforms, approaches, and considerations, for supporting youth alternative livelihoods (off-farm and non-farm work) within BHA-funded food security programs. **2021**

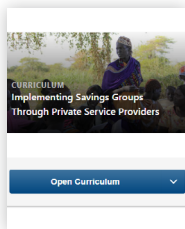
Webinar: [Tools and Guidance on Youth Livelihoods for Food Security Programs](#)



Putting Youth in the Lead: Technical Guidance for Youth-Led Market Assessments

This technical guidance note is primarily written for project staff working on USAID Office of Food for Peace (FFP)-funded activities with a heavy focus on understanding and strengthening economic opportunities for youth populations. It outlines distinct advantages, unique challenges, and key resources for facilitating youth-led market assessments. **2019**

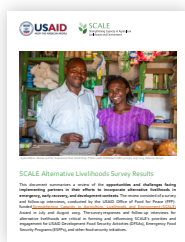
ADDITIONAL ALTERNATIVE LIVELIHOODS RESOURCES



Private Service Provider (PSP) Online Course (create a free account to access) **FR**

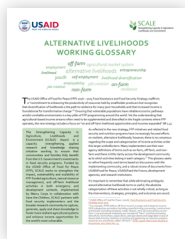
This course aims to equip staff, principally project officers and field supervisors, to train and support field agents to form, train, and supervise community-based savings groups, and to become successful and self-sufficient private service providers. The PSP model, developed by Catholic Relief Services (CRS), sees that savings groups are formed, trained and supported by networks of community-based, fee-for-service trainers in order to ensure sustainability. **2022**

Webinar: [PSP Online Course Launch](#)



Alternative Livelihoods Survey Results

This document summarizes a review of the opportunities and challenges facing implementing partners in their efforts to incorporate alternative livelihoods in emergency, early recovery, and development contexts, compiled from survey responses and follow up interviews. **2020**



Alternative Livelihoods Working Glossary

This glossary offers definitions and clarifications for alternative livelihoods terminology. From 'formal work' to the 'informal economy,' 'self-employment' to 'entrepreneurship,' and 'off-farm' to 'non-farm' livelihoods, this document unpacks terms and helps users understand common usages and distinctions, interlinkages with food systems development, specific program examples, and where the lines get a little blurry. **2019**

Video: [What's in a name? From on-farm to non-farm livelihoods and everything in between](#)



An Integrated Approach to Alternative Livelihoods: Lessons from Nepal

This learning document, produced by SCALE and Save the Children, centers on focus group discussions and key informant interviews done with the Sabal Development Food Security Activity (DFSA) in Nepal that explores the strengths and challenges of the activity's alternative livelihoods work. **2019**



Make Me a Change Agent
webpage on the FSN Network >>

MAKE ME A CHANGE AGENT (MMCA)

The MMCA resources are designed for community-level workers who work on agriculture, livelihoods, and WASH-related activities and who engage with communities on behavior change and adoption of new techniques and practices. The resources aim to help strengthen fundamental skills and techniques around communication, negotiation, and facilitation. Although these resources are targeted at supporting the successful and sustainable implementation of agriculture, livelihoods, and WASH activities, the skills can help staff and volunteers in any sector become more effective agents of behavior change.³



Make Me a Change Agent Online Course (create a free account to access) **FR**

This 13-hour curriculum explores fundamental skills in social and behavior change for agriculture, livelihoods, and WASH activities and allows users to practice different techniques to strengthen their skills. Each lesson can be completed separately or as a full curriculum, and the course can be completed individually or with colleagues using an accompanying Facilitator's Guide that is available within the course. **2022**

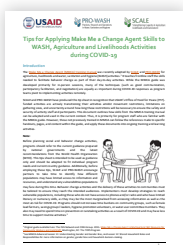


Make Me a Change Agent: An SBC Resource for WASH, Agriculture, and Livelihoods Activities **AM FR**

This training manual accompanies the online course and uses a modular format to allow for adaptations to meet the needs of the program or team. The training can be delivered in various ways: multiple lessons at once during a three to five day training, or individual lessons over a period of time. The training is highly participatory and allows time for participants to practice skills, co-facilitate components of lessons, and develop action plans to use and/or train others on the skills. **2020**

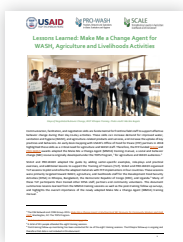
Video: [Make Me a Change Agent Promotional Video](#)

Videos: [Make Me a Change Agent YouTube Channel](#)



Tips for Applying Make Me a Change Agent Skills to WASH, Agriculture and Livelihoods Activities during COVID-19

This short document provides tips and resources for applying MMCA skills to WASH, agriculture and livelihoods activities during times of COVID. **2020**

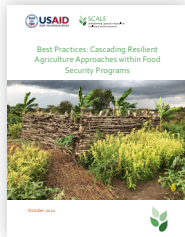


Lessons Learned: Make Me a Change Agent for WASH, Agriculture and Livelihoods Activities

This document summarizes lessons learned from four pilot MMCA training sessions as well as the post-training follow up surveys. **2020**

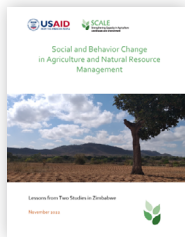
³ These resources were co-created through the SCALE and PRO-WASH awards; the resources were adapted for agriculture and WASH audiences from the Make Me a Change Agent: A Multisectoral SBC Resource for Community Workers and Field Staff resource originally developed under the TOPS Program.

SOCIAL AND BEHAVIOR CHANGE



Best Practices: Cascading Resilient Agriculture Approaches within Food Security Programs

This document presents a set of best practices for BHA-funded program staff to consider when cascading resilient agriculture approaches to partner organizations, agricultural extension staff and farming communities. The practices are based on RFSA evaluations and incorporate past learning on adaptive management, mentorship and the use of demonstration sites, as well as adult learning principles and social and behavior change studies. This resource is also in the [Resilient Agriculture](#) section. **2022**



Social and Behavior Change in Agriculture and Natural Resource Management **FR**

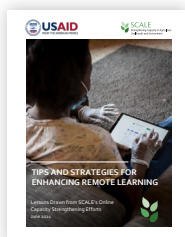
This document highlights key learnings from studies conducted by the USAID/BHA-funded Amalima Loko program in Zimbabwe around the barriers and motivations for behavior change in agriculture and NRM practices in its implementation area. It explores insights and highlights issues that are broadly applicable to the work of designing and implementing SBC approaches in these sectors. This resource is also in the [Resilient Agriculture](#) section. **2022**

ADULT LEARNING



In-Person Training in Times of COVID: Lessons and Insights from the Fall 2021 Zimbabwe Training

This report offers some early reflections and lessons learned in implementing effective in-person training while maintaining strong COVID safety protocols in Zimbabwe in October, 2021. Lessons include having go/no-go protocols; having clear and transparent COVID testing and vaccination expectations; and following local COVID safety protocols throughout the training. **2021**



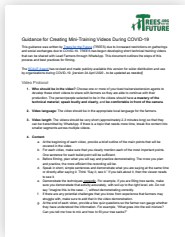
Tips and Strategies for Enhancing Remote Learning **FR**

This document summarizes key insights from SCALE's experience in developing and facilitating online training courses and events in response to COVID-19, including a MMCA training and a Permagarden remote learning series. These insights may be useful to others planning their own online capacity strengthening events. **2021**



Resilience Design Mentorship Pilot: Approach, Findings, and Lessons Learned

This report summarizes the methodology, findings from the baseline and endline surveys, and lessons learned from an agriculture mentorship project that SCALE piloted in the DRC from May 2019-March 2020. The pilot mentorship initiative included a small group of agriculture technical staff from the USAID/BHA-funded Food Security Program Enyanya. This resource is also in the [Resilient Agriculture](#) section. **2020**



Guidance for Creating Mini-Training Videos During COVID-19

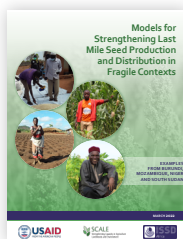
This guidance is for programs looking to create short technical training videos that can be shared with extension agents, field facilitators, lead farmers, and others through WhatsApp or other messaging applications. The guidance was originally written by Trees for the Future, in response to increased restrictions on gatherings and social exchanges due to COVID-19, and adapted by SCALE. **2020**

KEY RESOURCES



Seeds Learning Group

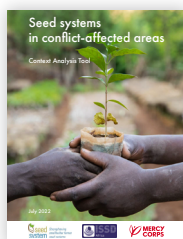
These recordings and presentations are from a four-week learning group conducted for BHA-funded implementers. Topics covered in the sessions include: seed system basics; introduction to seed system assessments (SSAs) and how to access and use existing tools, trainings, and other resources; common pitfalls related to assessments and responses, and how to avoid them; and BHA expectations around SSAs. **2022**



Models for Strengthening Last Mile Seed Production and Distribution in Fragile Contexts **FR**

These four cases offer inspiring examples of models for strengthening last mile seed production and distribution for better seed systems resilience in fragile environments. The cases provide examples from Burundi, Mozambique, Niger, and South Sudan of approaches to reach smallholder farmers, highlighting what works, what might best be dropped, and how to respond to various challenges. **2022**

Webinar: [Last-Mile Seed Systems in Fragile Contexts](#)



Seed systems in conflict-affected areas: Context Analysis Tool (CAT) **FR**

This tool provides humanitarian actors working in conflict affected areas with an analysis process to understand seed systems in conflict settings. The CAT aims to help implementers design effective interventions to support and develop these seed systems, while ensuring that farming community members' needs drive the seed system strengthening, recovery, and development process. **2022**

Webinar: [Seed Systems in Conflict-Affected Areas: A Context Analysis Tool](#)

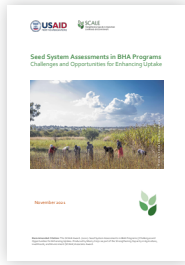


Seed Emergency Response Tool (SERT): Guidance For Practitioners **FR**

This tool presents the background and concepts needed to understand how farmers in stress periods might obtain the seed they want and need, and synthesizes the growing body of 'good or better practices' linked to seed security planning, assessment, and response. It contains 10 core principles; decision trees for choosing a suitable intervention; checklists for evaluating responses; and reference materials for more technical detail. The SERT is for policymakers, program managers, and field staff engaged in emergency and early recovery agricultural responses. **2022**

Webinar: [Seed Emergency Response Tool](#)

KEY RESOURCES



Seed System Assessments in BHA Programs | Challenges and Opportunities for Enhancing Uptake **FR**

This document highlights challenges and opportunities to SSAs identified through consultations with technical advisors and program implementers, as well as BHA staff. This document includes a summary of BHA's observations of the gaps and shortfalls around SSA use at the application stage, the main barriers to SSA uptake and adoption as reported by implementing partners, and brief analysis of the process and key takeaways. **2021**



Seed-Related Assistance in Fragile Contexts: Lessons for the COVID-19 Response

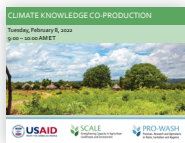
This webinar offered a practical, farmer-centered conversation sharing key guidance and lessons for seed system interventions in the COVID-19 response. **2020**

Webinar Q&A document: [Seed-Related Assistance During COVID-19 Response: Webinar Q&A](#)



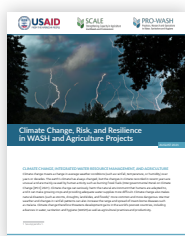
Climate Resilience

KEY RESOURCES



Climate Knowledge Co-Production

In this webinar, two programs, Future Climate for Africa (FCFA) and Weather and Climate Information Services for Africa (WISER), shared their lessons learned on co-production approaches focusing on service delivery, disaster risk reduction, and development based on user needs. **2022**



Climate Change, Risk, and Resilience in WASH and Agriculture Projects **FR**

This brief introduces climate information services (CIS), and describes how CIS can help RFSAs and partners improve planning, reduce risk, and increase resilience. As climate change impacts WASH and agriculture programs, and threatens progress, CIS are becoming powerful tools and resources. This brief includes resources for CIS and introduces national, regional, and global CIS providers and partners. **2021**



Early Warning for Food Security using Satellite-based Crop and Rangeland Monitoring System

This webinar discussed the IGAD Climate Predictions and Applications Center (ICPAC) initiative in East Africa, exploring how its work can support RFSAs and other development projects in the region. **2021**



Early Warning and Resilience Systems in Sub-Saharan Africa

This webinar explored innovative advances from two projects focused on early warning, climate change, resilience and food security in Sub-Saharan Africa. **2021**

KEY RESOURCES



Participatory Climate Information Services Systems Development: Facilitator's Guide (PCISSD) **FR**

This Facilitator's Guide is a companion piece to the PCISSD Methodology, which was produced under the USAID-funded Climate Information Services Research Initiative (CISRI) project. It provides step-by-step directions for facilitators implementing the participatory workshops described in Stage 4 of the methodology, with a focus on guiding participants through three exercises. **2020**

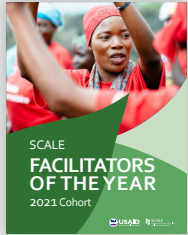


Climate Information for Nepal's Farmers: Findings from a Participatory Assessment in Rukum, Surkhet and Doti

This report assesses the effectiveness of the USAID/BHA-funded PAHAL program's climate services in Nepal, examining barriers to information access and use from multiple sources including the government's Agriculture Management Information System. The approach for this assessment was adapted from the PCISSD Methodology developed under the USAID-funded CISRI project. **2019**

Special Initiatives

FACILITATORS OF THE YEAR



SCALE 2022 Facilitators of the Year Catalogue **FR**

SCALE 2021 Facilitators of the Year Catalogue **FR**

SCALE 2020 Facilitators of the Year Catalogue **FR**

The SCALE Facilitators of the Year Initiative recognizes and celebrates program staff who are implementing agriculture, NRM, or alternative livelihoods-related activities around the world.

CREATIVE ADAPTATION AWARDS



SCALE Creative Adaptation Award 2022: Local Actors Enhancing Food Systems

This page highlights three humanitarian and development organizations working at the local level to rapidly adapt the ways in which they deliver critical aid and programming, and help communities around the globe face unprecedented challenges. **2022**

Webinar: Local Actors Enhancing Food Systems: SCALE's Creative Adaptation Award 2022



SCALE Creative Green Adaptation Award 2021 **ES FR**

This brief highlights five organizations that demonstrated innovative approaches to addressing environmental and climate change challenges in the sectors of agriculture, NRM, and livelihoods. They demonstrate climate adaptability in action and provide valuable lessons for other implementing partners. **2021**

Webinar: Meet the Changemakers: SCALE Creative Green Adaptation Award Winners 2021

Video: Creative Green Adaptation Award Winners' Videos



SCALE Creative Adaptation Award 2020: Voucher-Based Approach to Soap Distribution

This brief features the CARE-led Livelihoods for Resilience Activity's creative innovation in light of challenges posed by COVID-19. The program was setting up sustainable distribution chains for soap and other products in rural Ethiopia, but in light of COVID-19, they pivoted from a standard micro-franchise approach to a voucher-based approach. **2020**



USAID
FROM THE AMERICAN PEOPLE



SCALE
Strengthening Capacity in Agriculture
Livelihoods and Environment