

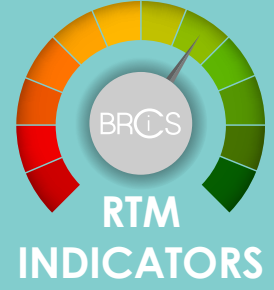


## BRCiS REAL TIME RISK MONITORING FOR EARLY ACTION

Early actions, taken ahead of impending shocks, and early response enable individuals, households and communities to mitigate shocks' impact and prevent humanitarian crisis.



## RED-FLAGGING APPROACH FOR TRIGGERING EARLY



### Climate and non-climate shocks



### Shock impact indicators

#### Food security & Livelihoods



#### Local markets



#### Coping



## EARLY ACTION BUDGET JANUARY 2020 - MARCH 2021

1,390,887  
Crisis Modifier multiple shocks

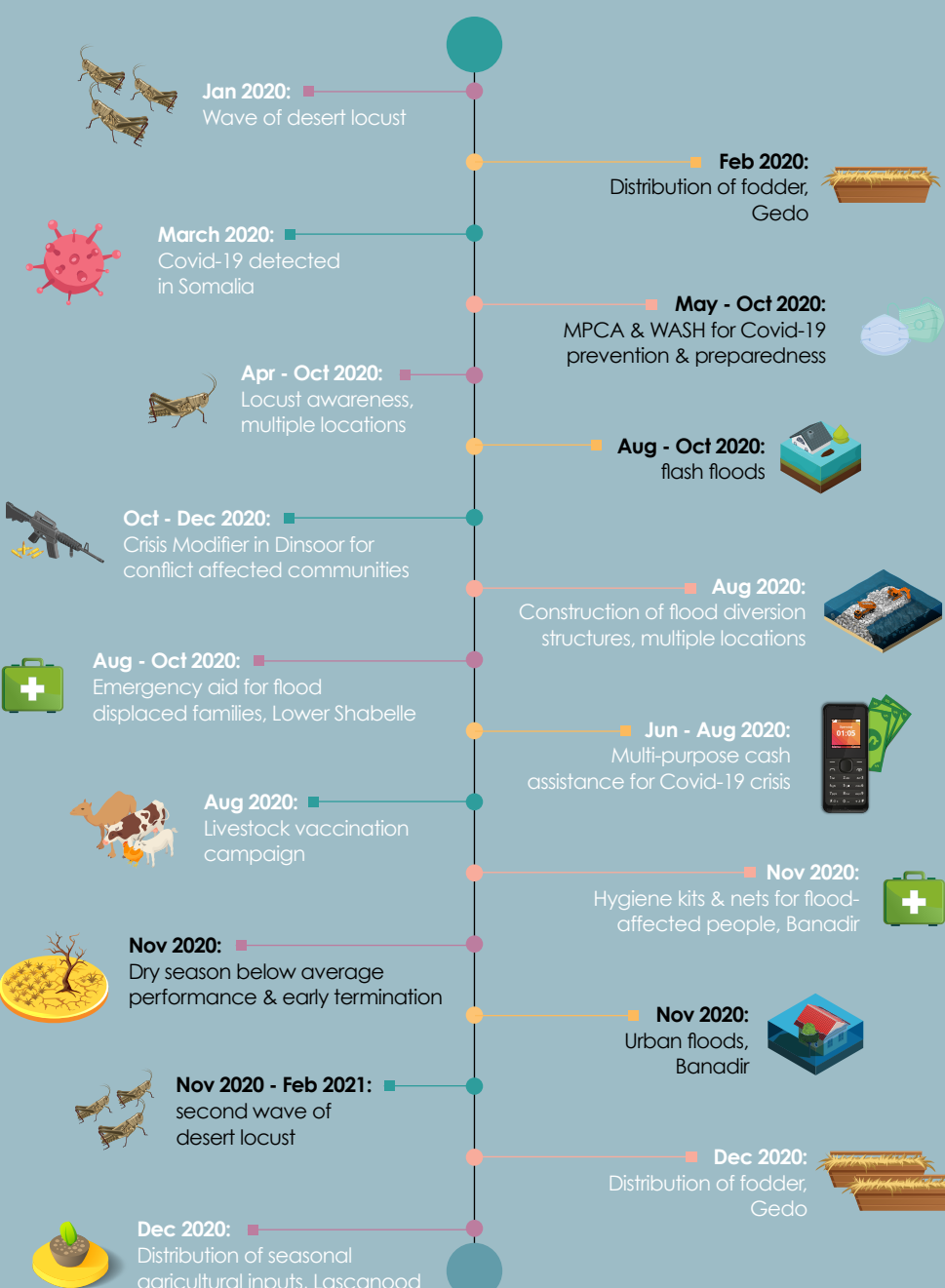
337,193  
Safety net scale-up

31,050  
Monetary value of community contribution

2,647,500  
Members early action budget

2,875,085  
Crisis Modifier Covid-19

## INTERVENTION ~ SHOCKS JAN - DEC 2020



## NUMBER OF PEOPLE REACHED THROUGH EARLY ACTION AND CRISIS MODIFIER JAN 20-MAR 21

1,937 households  
safety nets scale-up

16,908 households  
multi-purpose cash assistance for Covid-19 livelihood crisis



33,475 households  
multi-purpose cash assistance for multiple hazards

3,044 households  
community water vouchers for drought-affected people



3,370 households  
emergency health, hygiene kits and mosquito nets for flood-affected people

1,700 households  
hygiene kits and emergency sanitation for outbreak prevention



1,004 households  
fodder supply for drought affected animals

