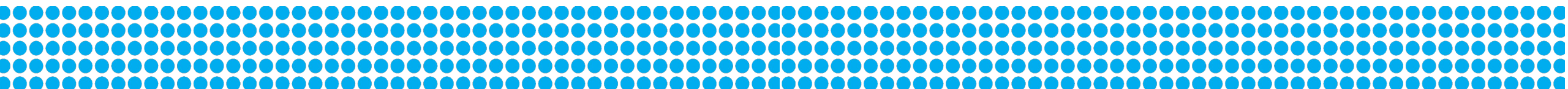




Overview of U-Learn 2021-2023 resources

Marijke Deleu – Learning Hub Manager - marijke@ulearn-uganda.org



Sustainable Livelihoods Resources



Research

The Realities Of Self-Reliance Within The Ugandan Refugee Context

Report:

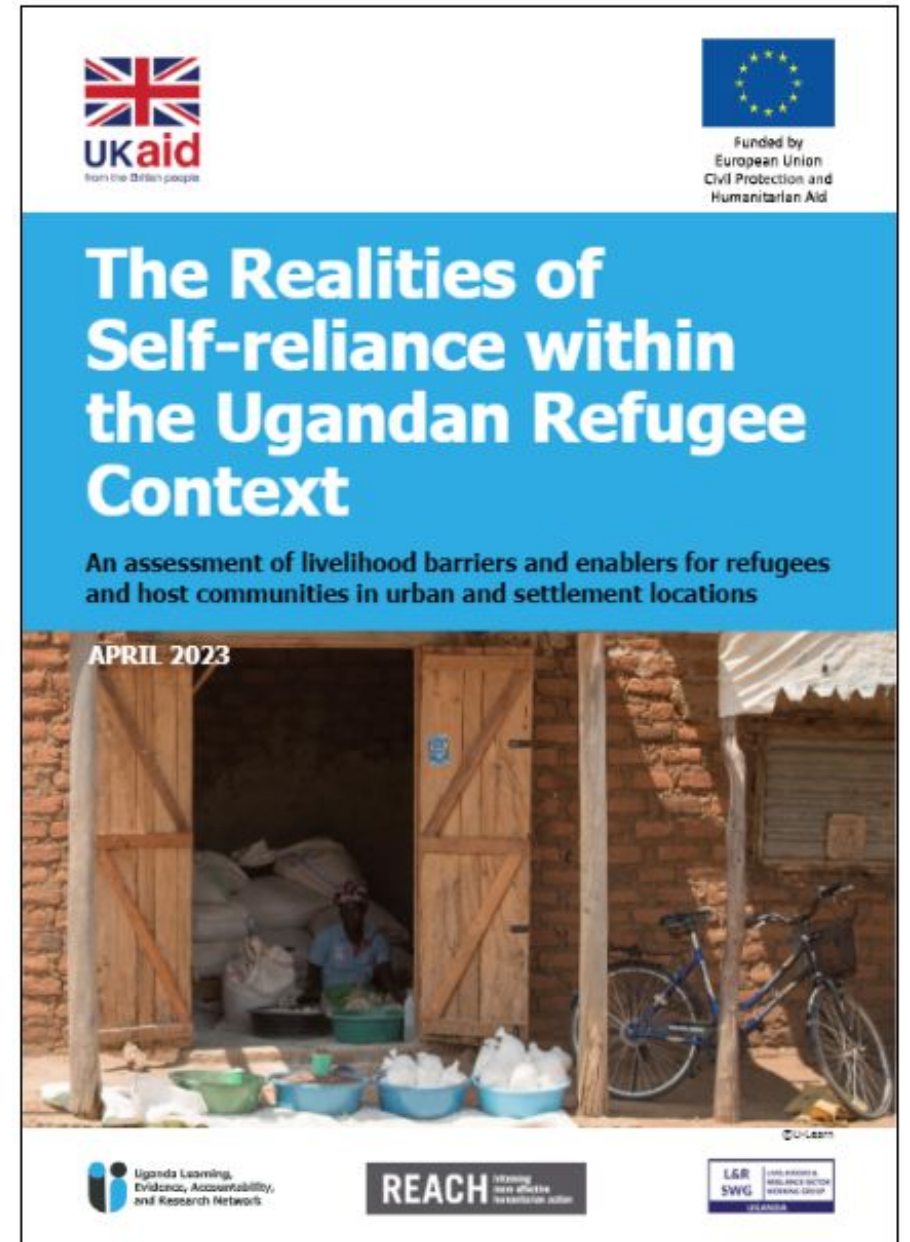
<https://ulearn-uganda.org/the-realities-of-self-reliance-within-the-ugandan-refugee-context/>

Research Brief:

<https://ulearn-uganda.org/the-realities-of-self-reliance-within-the-ugandan-refugee-context-research-brief>

Research findings presentation:

https://drive.google.com/drive/folders/14zDKbNqMsbPj1MpsMLQ_rysqIOdvt83E?usp=sharing



Digital Savings Groups (DSG) Learning Review

Learning Brief

<https://ulearn-uganda.org/digital-savings-groups-in-uganda-learning-brief/>

Workshop recording

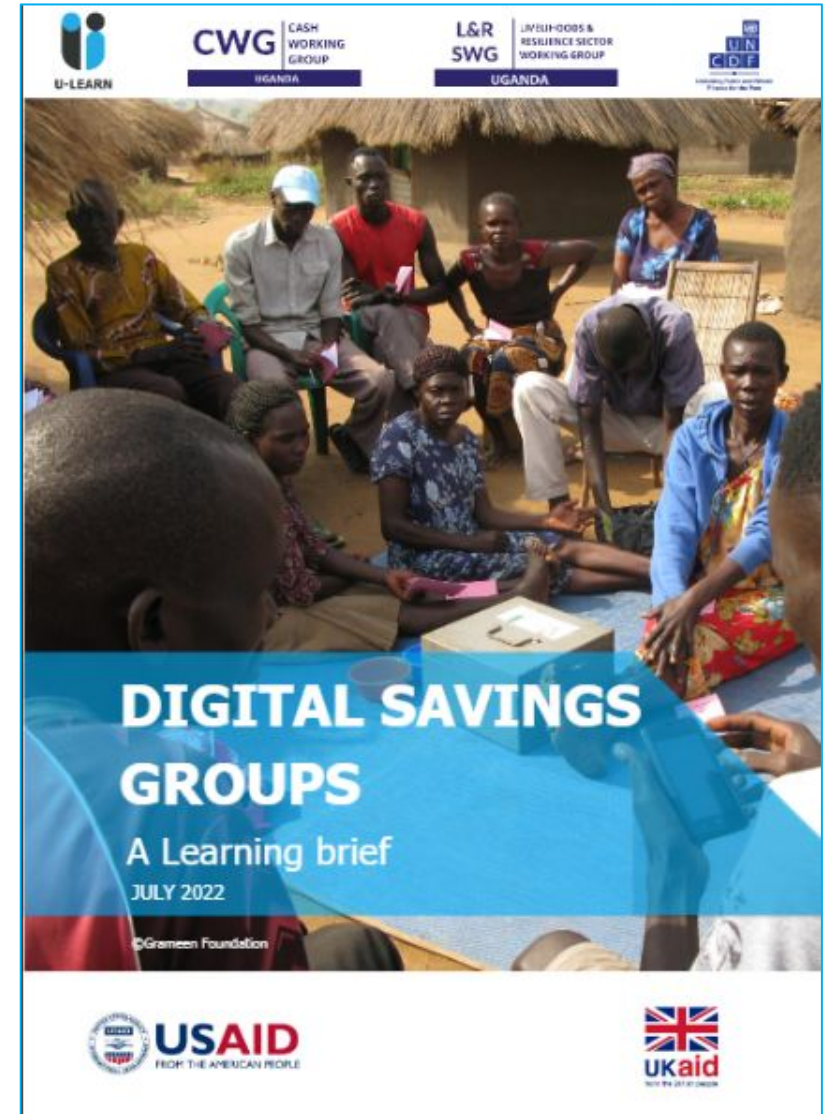
<https://ulearn-uganda.org/recap-and-recordings-of-workshop-on-digital-savings-groups-dsgs/>

Online fair of digital service providers

<https://ulearn-uganda.org/digital-savings-groups-online-fair/>

Support Tool: Checklist For Moving Savings Group Digital Criteria

<https://ulearn-uganda.org/support-tool-checklist-for-moving-savings-group-digital-criteria/>



Labour Market Assessment (LMA) desk review

- Highlights key information from 25 documents about labour markets in the 13 refugee-hosting districts of Uganda.
- The findings are presented in relation to three main themes: 1) labour supply; 2) labour demand; and 3) training to match the available skills with the demand.
- Includes an annotated bibliography of 25 resources about Labour Markets

<https://ulearn-uganda.org/labour-market-assessments-covering-refugee-hosting-districts-in-uganda-a-desk-review/>



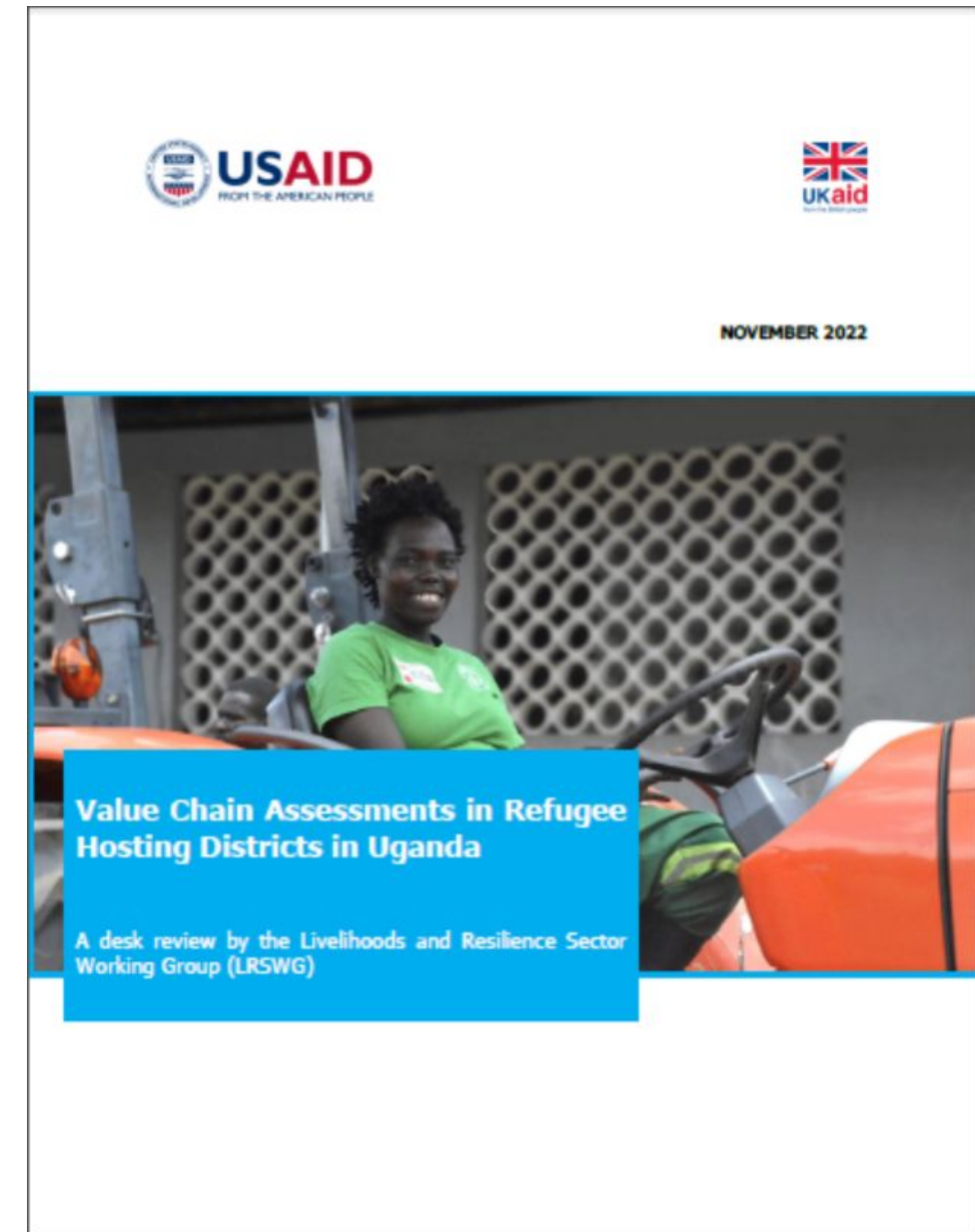
NOVEMBER 2022



Value Chain Assessment (VCA) desk review

- 29 value chain (VC) analyses in the 13 refugee-hosting districts of Uganda
- Includes an annotated bibliography of 25 resources about Value Chains
- LRSWG Strategic positioning paper planned for January 2023

<https://ulearn-uganda.org/value-chain-assessments-in-refugee-hosting-districts-in-uganda-a-desk-review/>



Private Sector Engagement desk review

Patterns and Potential of Private Sector Engagement in Strengthening Refugee Livelihoods and Resilience. Desk review for the Uganda refugee response

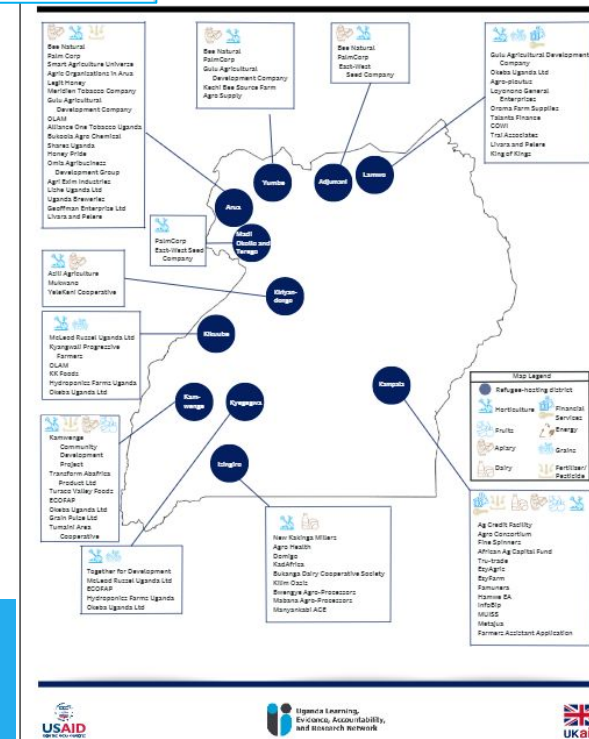
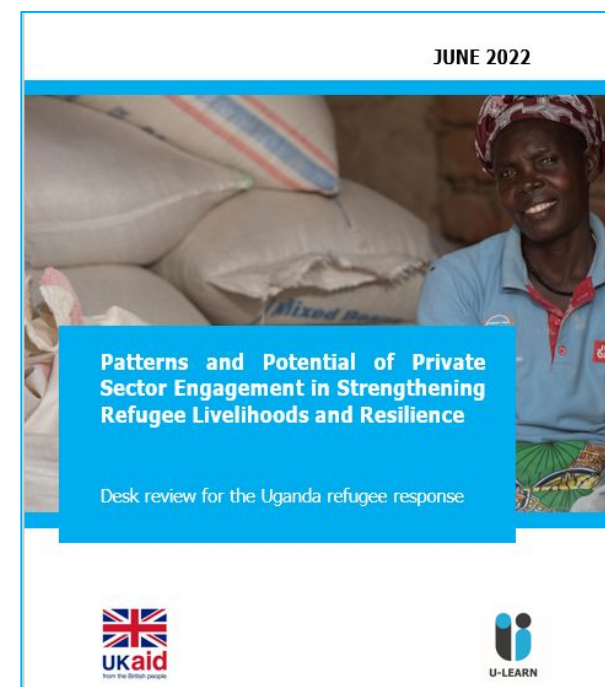
<https://ulearn-uganda.org/desk-review-on-private-sector-engagement-in-the-uganda-refugee-response/>

Agriculture sector Private Sector Actor (APSA) Mapping

Agriculture sector Private Sector Actor Mapping

<https://ulearn-uganda.org/a-mapping-of-agriculture-private-sector-actor-apsa-in-uganda-as-refugee-response/>

Agri-Tech mapping: <https://ulearn-uganda.org/actor-mapping/>



Financial Inclusion Resources



Research

User Perspectives on Financial Services in the Uganda Refugee Response

Report:

<https://ulearn-uganda.org/financial-services-in-the-uganda-refugee-response/>

Research Brief:

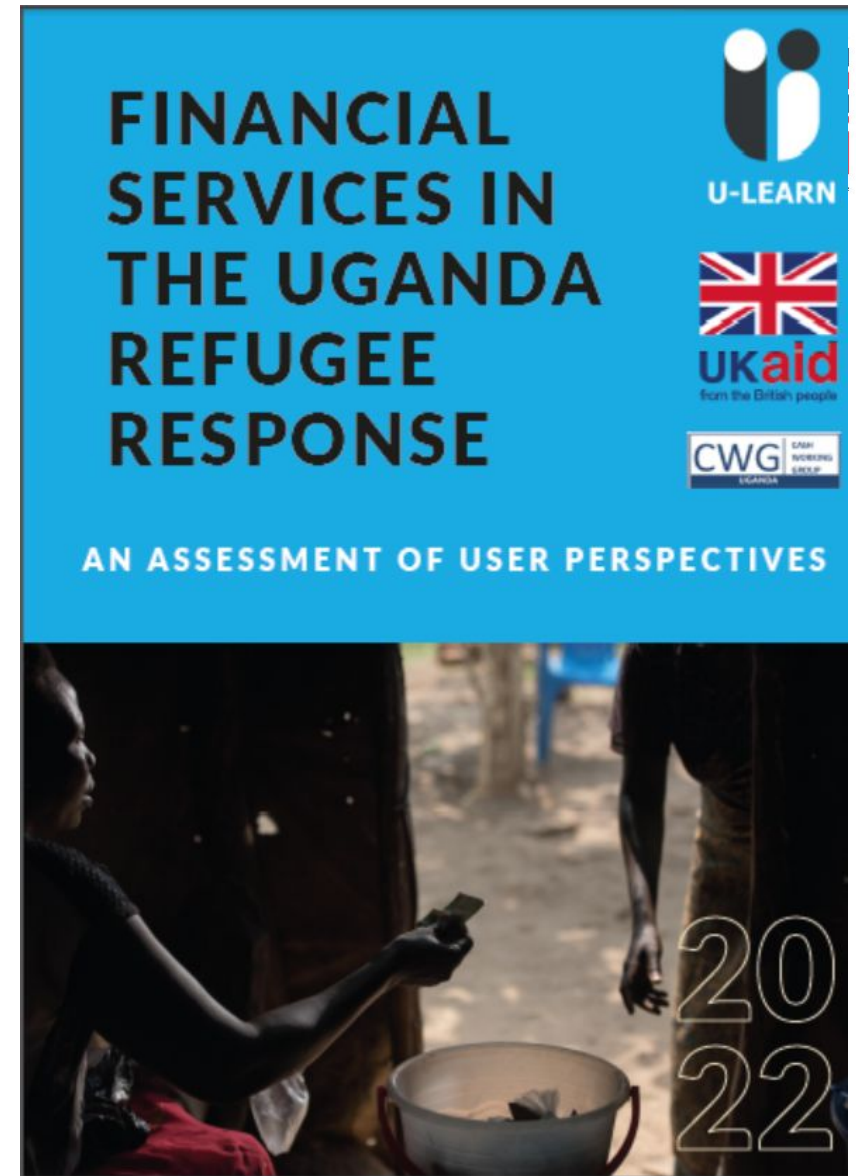
<https://ulearn-uganda.org/uganda-refugee-response-cash-and-voucher-assistance-cva-user-perspectives-research-brief>

Research findings

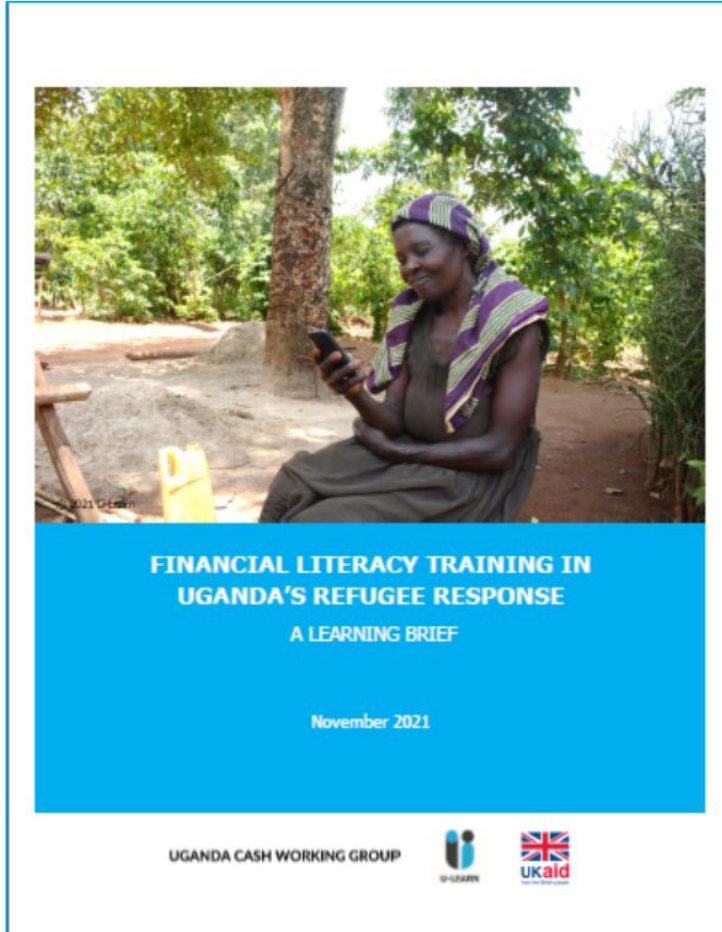
presentation: <https://ulearn-uganda.org/harmonising-cash-and-voucher-assistance-cva-in-the-uganda-refugee-response/>

CALP Blog:

<https://www.calpnetwork.org/blog/is-mobile-money-preferred-by-cash-recipients-in-refugee-response/>



Learning Review



Financial Literacy Training (FLT) learning review

Learning Brief

<https://ulearn-uganda.org/financial-literacy-training-in-ugandas-refugee-response-learning-brief/>

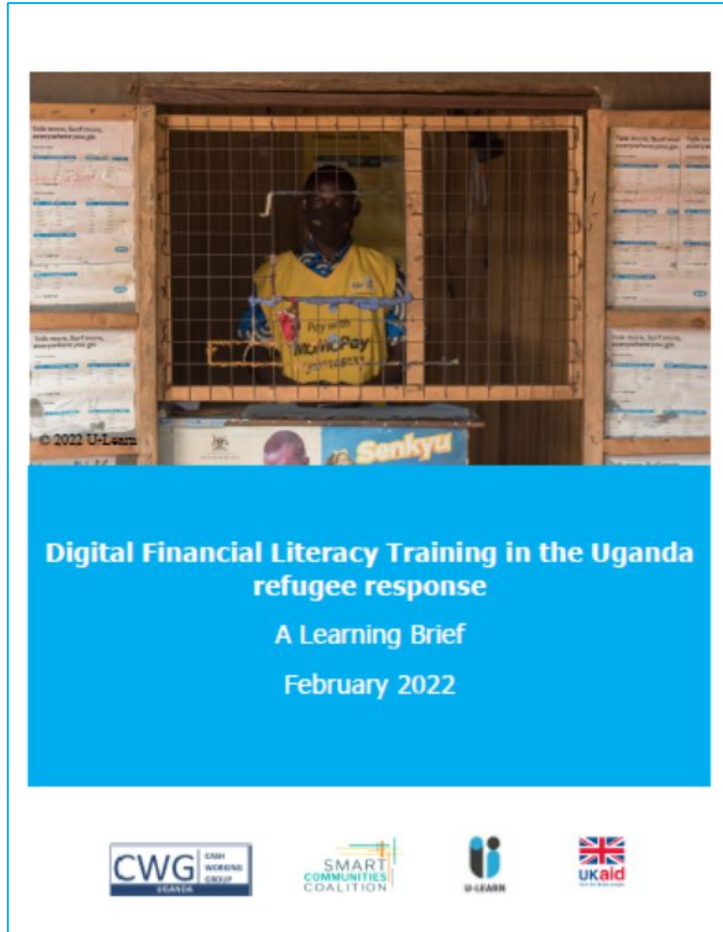
Learning discussion recording

<https://ulearn-uganda.org/financial-literacy-training-learning-discussion-recording>

Cash Working Group WG FLT Minimum standards

<https://ulearn-uganda.org/uganda-refugee-response-financial-literacy-training-minimum-standards/>

Learning Review



Digital Financial Literacy Training (DFLT) Learning Review

Learning Brief

<https://ulearn-uganda.org/digital-financial-literacy-training-in-the-uganda-refugee-response-learning-brief/>

Webinar recording

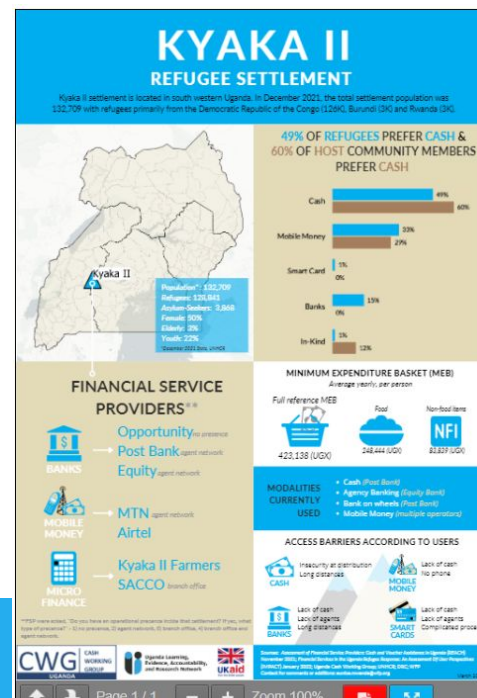
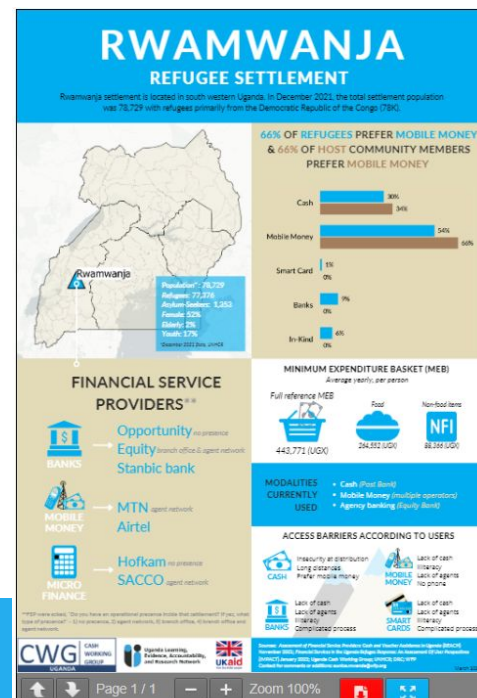
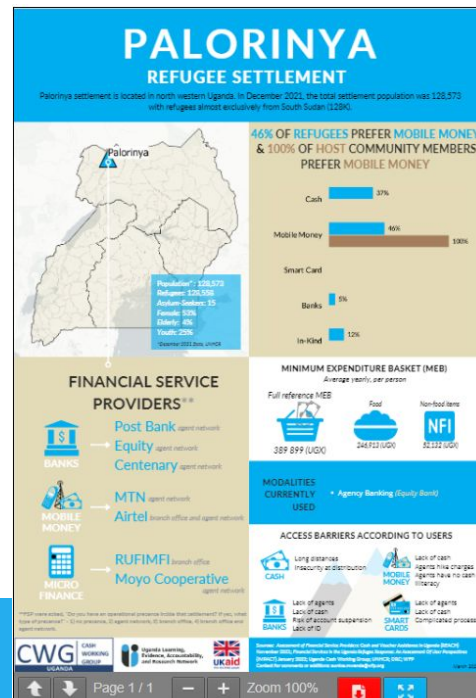
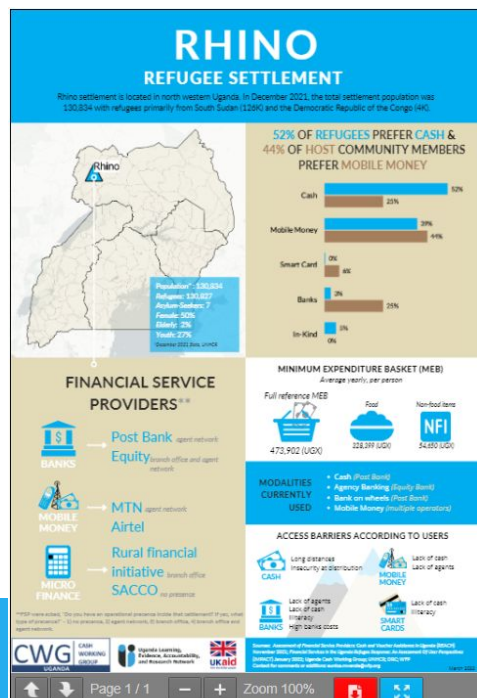
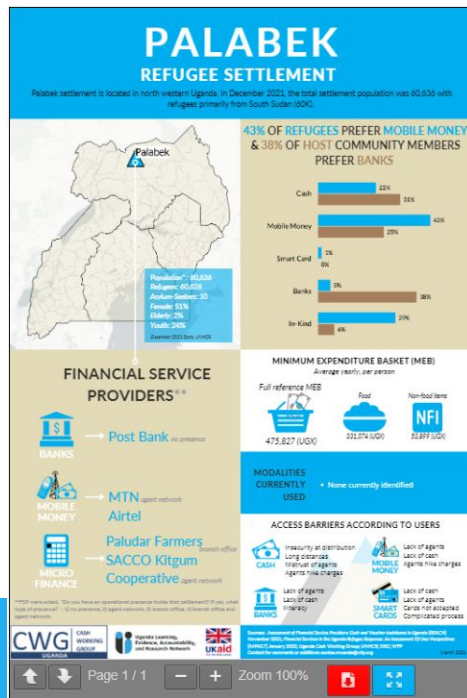
<https://ulearn-uganda.org/digital-financial-literacy-training-in-ugandas-refugee-response-webinar-recording/>

Settlement-level Infographics

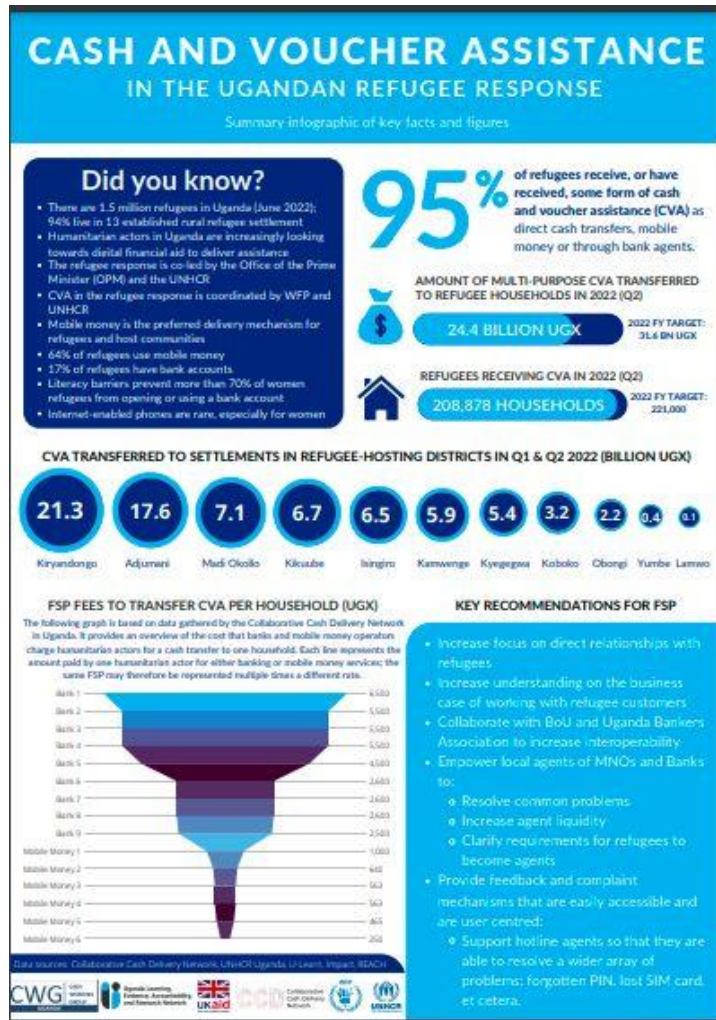
<https://ulearn-uganda.org/settlement-level-cva-infographics/>

These provide data per settlement on user preferences, available FSPs, the MEB, existing cash transfer modalities and access barriers to these.

They pull together multiple sources of data: [Assessment of Financial Service Providers: Cash and Voucher Assistance in Uganda \(REACH, 2021\)](#), [Financial Services in the Uganda Refugee Response: An Assessment Of User Perspectives \(U-Learn, 2022\)](#), data from the Uganda Cash Working Group, UNHCR, DRC, and WFP.



CCA and CVA resources



Cash and Voucher Assistance (CVA)

Harmonisation of CVA workshop sessions:

<https://ulearn-uganda.org/harmonising-cash-and-voucher-assistance-cva-in-the-uganda-refugee-response/>

Infographic On CVA In The Uganda Refugee Response:

<https://ulearn-uganda.org/infographic-on-cash-and-voucher-assistance-in-the-uganda-refugee-response/>

Common Cash Approach (CCA)

Informing the Uganda refugee response Common Cash Approach (CCA) – A Technical Brief:

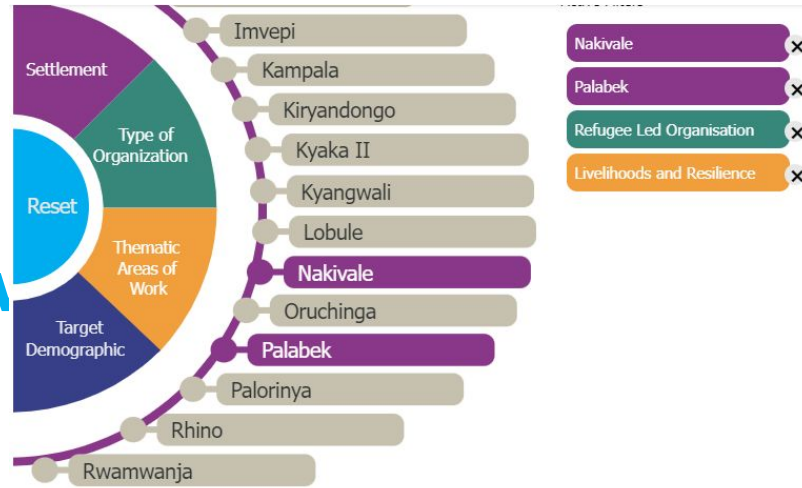
<https://ulearn-uganda.org/informing-the-uganda-refugee-response-common-cash-approach-a-technical-brief/>

Localisation resources



Which local actors are active at the settlement-level?

Settlement-Level Actor Mapping Visualisation (SLAM)



[Click here to add your organization's details](#)

The Settlement-Level Actor Visualisation (SLAM) was developed by U-Learn, in collaboration with:



<https://ulearn-uganda.org/local-actor/>

All Refugee Can

Type of Organization: Refugee Led Organisation

Thematic areas of work: Livelihoods and Resilience, Food Security, Education

Settlements in which the org is active: Nakivale

Target Demographic: Children Under Twelve Years, Elderly, Men, People With Disabilities, Women, Youth Twelve to Thirty Years

Bedi Rwot

Type of Organization: Refugee Led Organisation

Thematic areas of work: Cash Based Interventions, Livelihoods and Resilience, Food Security

Settlements in which the org is active: Palabek

Target Demographic: Elderly, Men, Women, Youth Twelve to Thirty Years

Cebuna

Type of Organization: Refugee Led Organisation

Thematic areas of work: Livelihoods and Resilience, Education

Settlements in which the org is active: Nakivale

Target Demographic: Children Under Twelve Years, Youth Twelve to Thirty Years

Congolese Refugee Community in Uganda

Type of Organization: Refugee Led Organisation

Thematic areas of work: Protection, Health, Livelihoods and Resilience, Education

Settlements in which the org is active: Kyaka II, Nakivale, Kampala

Target Demographic: Children Under Twelve Years, Elderly, Men, People With Disabilities, Women, Youth Twelve to Thirty Years

Domijo

Type of Organization: Refugee Led Organisation

Kica Ber

Type of Organization: Refugee Led Organisation

Accountability to Affected populations (AAP) Resources



Refugee Engagement Forum in Uganda Good Practice Study

Report:

<https://ulearn-uganda.org/refugee-engagement-forum-in-uganda-good-practice-study/>

Good practice study Brief:

<https://ulearn-uganda.org/refugee-engagement-forum-in-uganda-good-practice-study-brief/>

Presenters' guide:

<https://ulearn-uganda.org/refugee-engagement-forum-ref-presenters-guide/>

Blog:

<https://aap-inclusion-psea.alnap.org/blogs/refugee-voice-and-choice-including-refugees-in-high-level-response-decision-making>



Refugee Engagement Forum in Uganda

Good Practice Study

Uganda 2021



Tailored Evidence and Learning Service (TELS)



CROSS-SECTORAL LEARNING

Tailored Evidence & Learning Service (TELS)

TELS is a *free* service designed to support cross-sectoral learning and the increased use of evidence and good practices in the Uganda refugee response.

Submit a TELS Request

The support on offer includes

- Curating resources
- Developing summaries of evidence
- Visualising resources
- Support dissemination of evidence
- Convening actors through learning events

Do you need learning support?

We might be able to help through our TELS for the Uganda refugee response

The service aims to add value to the overall Uganda refugee response by increasing the use of evidence and good practices.

Read more in the flyer:

<https://ulearn-uganda.org/the-tailored-evidence-and-learning-service-tels-flyer/>

Or apply: <https://ulearn-uganda.org/tels-request/>



Thank you!



Get in touch:
marijke@ulearn-uganda.org

All U-Learn resources can be downloaded from our website:
www.ulearn-uganda.org

@ULearnUganda