

Impact Insights: Expanding Our Evidence Base to Improve Humanitarian Response

*Impact Evaluation in Action: Why &
How to Do Them*

March 21, 2024



USAID
FROM THE AMERICAN PEOPLE



Humanitarian Assistance Evidence Cycle (HAEC)

HAEC works to increase the **efficiency and effectiveness** of emergency food security activities funded by the USAID Bureau for Humanitarian Assistance (BHA) by increasing the use of **cost-effective and timely impact evaluations** in humanitarian contexts.



Funding six impact evaluations



Funder: USAID/BHA, **Duration:** 2021-2024
Implementers: TANGO International, Causal Design, 3ie, and Save the Children

Overview of *Impact Insights* Series

Webinar 1

What is an impact evaluation?

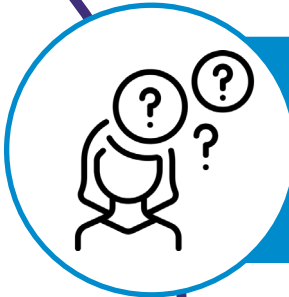
Webinar 2

How can we conduct impact evaluations in humanitarian settings?

Webinar 3

Why do an impact evaluations and how do we use findings?

Today's Focus:



Why do Impact Evaluations?

- Examples of where impact evaluations are valuable and the types of decisions their findings can inform



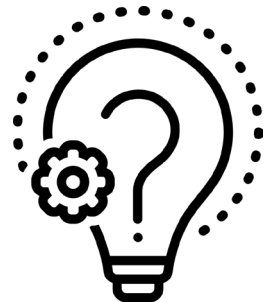
How to do them?

- How strong researcher and implementing partner relationships enable research to be modified or pivoted
- How impact evaluation methods can accommodate common humanitarian programming contexts

Have you worked on a humanitarian activity that utilizes vulnerability assessments to inform program eligibility?

The How: Vulnerability Assessments as an Opportunity for Impact Evaluations

- Humanitarian implementers routinely use vulnerability assessments to determine program eligibility
- Vulnerability assessments coupled with regression discontinuity design (where participants are compared right above and below eligibility cut off) can offer a great opportunity for causal learning



Action Against
Hunger,
Norwegian
Refugee
Council, Danish
Refugee
Council

**Research
Partner:**
3ie

Country:
Colombia

Sector:
Food Security &
Resilience

Design: Regression Discontinuity Design (RDD)

Activity:

Unconditional MPCA transfers of \$77 USD per household per month for 6 months

Research Question:

1. What is the impact of unconditional MPCA among immigrants and internal migrants in Colombia on long-term (12 to 16 months) financial stress (e.g., food insecurity), income and labor market participation, emotional well-being, social integration, and onwards migration ?



The Why

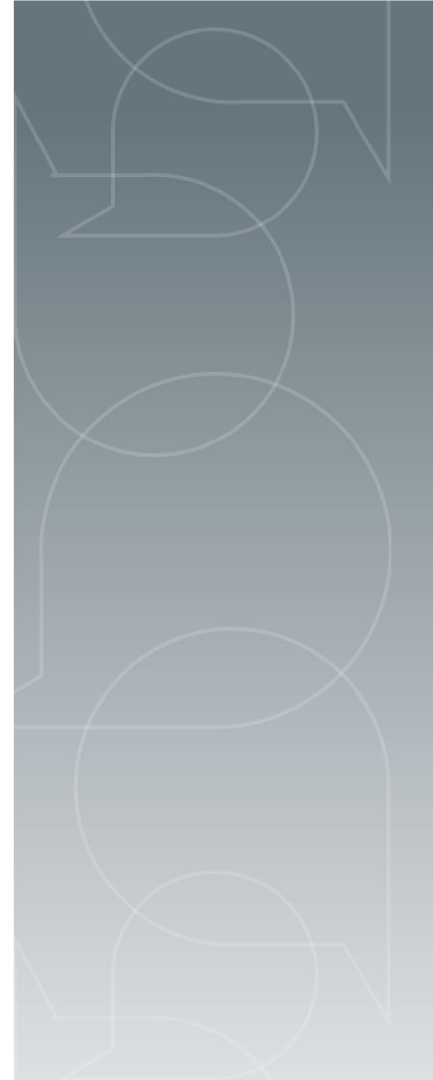


Implementer Implications: *Understanding persistence of programming into the future* and which outcomes persist versus don't allow for IPs to adapt their programming.

Country Level Implications: *Understanding the persistence of programming into the future* will inform complementarity of how programs are layered by National governments and NGO partners

Donor Level Implications: *Understanding the persistence of programming into the future* will inform BHA funding cycles

**Danish Refugee Council
& Dr. Christine Moser in
Niger**



The Importance of Implementer-Focused Research Partnerships

- Focus on questions **specific to implementers** and context
- Identify research partners with experience using **adaptive and flexible research designs**
- **Procurement mechanisms** significantly influences research partner engagement

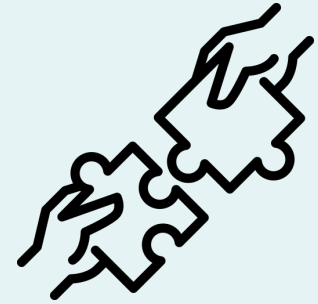
Effective Research Partnerships

Flexible research & procurement methods

Implementer-driven research questions

Research agility

leads to



Valuable research products for implementers

Closing from Mara Mordini

HAEC Award Officer
Representative and BHA
M&E TPQ Team Member



Looking ahead

Additional Engagement Opportunities

- Office Hours for Emergency Application Guideline Applicants
- Sign up for our Newsletter
 - Most recent newsletter was released last week



New and Noteworthy

Impact Insights Webinar Series

The graphic features a blue background with a white box at the top containing the title "Impact Insights: Expanding Our Evidence Base to Improve Humanitarian Response". Below this are three numbered items in white speech bubbles: "1 Impact Evaluations: There is a Different Way to Do It", "2 Navigating Constraints to Impact Evaluations in Humanitarian Contexts", and "3 Impact Evaluation in Action: Why do them & How to Use Them". To the right is a photograph of a woman and a young child. At the bottom are the USAID and IDEAL logos.

Impact Insights:
Expanding Our Evidence Base to Improve Humanitarian Response

- 1 Impact Evaluations: There is a Different Way to Do It
- 2 Navigating Constraints to Impact Evaluations in Humanitarian Contexts
- 3 Impact Evaluation in Action: Why do them & How to Use Them

USAID FROM THE AMERICAN PEOPLE IDEAL

Thank you!



USAID
FROM THE AMERICAN PEOPLE



This presentation is made possible by the generous support of the American people through the United States Agency for International Development (USAID). The contents are the responsibility of the Humanitarian Assistance Evidence Cycle (HAEC) and do not necessarily reflect the views of USAID or the United States Government.