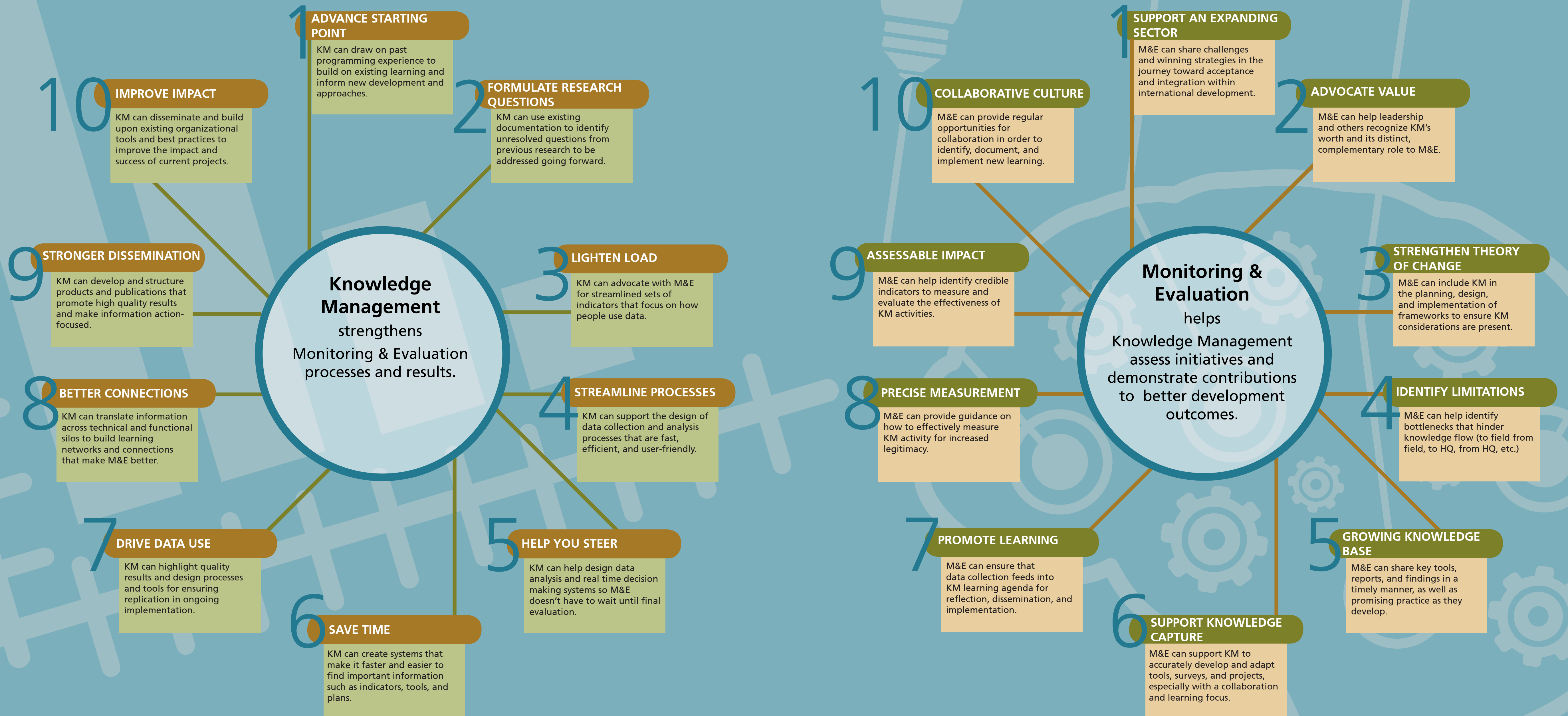


**Knowledge Management:** The process of generating new knowledge, capturing and organizing existing knowledge, adapting knowledge, and sharing it strategically.

**Monitoring & Evaluation:** Collecting, storing, analyzing, and transforming data into strategic information so it can be used to make informed decisions.

# The Complementary Relationship of Knowledge Management and Monitoring & Evaluation

## The Top 10 Ways KM and M&E Work Together



Definitions adapted from Global Health eLearning Center